

Spring on the Riesling Trail

[View this email in your
browser](#)

The Riesling Trail

Members of the U3A Walking Group, Sue, Margie and Sylvia resting under a magnificent wattle tree on the Riesling Trail next to the 'Mob of Sheep'.



Hello Member

and welcome to our Spring E-News | *Along the Riesling Trail ...*

Visit our website at <http://rieslingtrail.com.au/> for up to date information of what's happening on the Riesling Trail and around the Clare Valley.

From the Chairman

Coming out of winter into spring is always a popular time for the Riesling Trail. With school holidays coming up in a few weeks, we may see record numbers using the trail, even without the usual interstate and overseas visitors. This was certainly the case this time last year. The trail surface is in great condition and there are plenty of lush surroundings to admire. The odd magpie though doesn't agree, but I expect their territorial claims will fade away in a few weeks.

Since June, the shelter next to the Riesling Trail at the southern end of the Showgrounds has been completed. The finishing earthworks and a water tap were done by Shane Fraser from MAIT Plumbing, as a contribution to the trail. While on the go, Shane tidied up the area around the railway turntable in Clare. We are also pushing on with the installation of the railway platform and sculpture next to the trail at the northern end of the showgrounds. This is no small job and thanks to Trevor Mace, Jason Gill and helpers for putting in the platform and to Paul Leditschke for creation of the sculpture. Thanks also to Sue Wurst for the idea and drive to keep it going. We were delighted to receive \$2,000 from the Clare Combined Schools and Centres as a contribution towards this project. This, and other contributions from the Lions Club of Clare District and the Clare and Gilbert Valleys Council (Community Asset Grant), will help offset the cost (an estimated \$12,000).

We are also grateful for two other donations for more seats and tables along the

trail. Don Howell has provided a generous donation for a table and seat setting at the 2km north mark (at Schaefer's) in memory of his wife, Suzanne. The local Coffee and Chat group have raised sufficient funds for a second seat for the Riesling Trail, following on from their donation for a seat next to the Lennon Street park in Clare. This new seat will be next to the bridge over the River Wakefield just north of Auburn.

To cap off a busy few months of construction, we expect re-forming and sealing a section of the trail in front of the Riesling Trail Cottages to start later this month and be completed by the end of October.

A reminder that our AGM will be on Thursday 14th October at 7pm at the Madonna Hall, Sevenhill. Our guest speaker, John Ruwolt, will give us an abridged version of the history of the Riesling Trail and this will be followed by our traditional refreshments.

Allan Mayfield
Chairman

Vale Brother John May 10/8/1929 to 18/8/2021

Br John May SJ AM, the long-serving winemaker at Sevenhill Cellars in the Clare Valley, died on 18 August 2021 aged 92.

John was the seventh Jesuit Winemaker at Sevenhill, a position he held from 1972 until his retirement from full-time work in 2003. The winery was established in 1851 by the Society of Jesus, a Catholic religious order commonly known as the Jesuits.

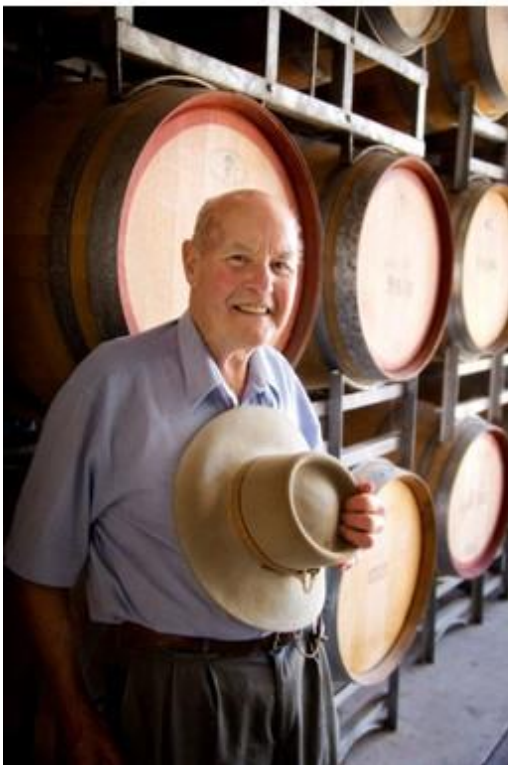
Over time he took courses in laboratory and cellar procedures at winemaking schools and was generously assisted by the local community of winemakers in the Clare Valley as he honed the craft.

Br John led the expansion of the Sevenhill vineyards, using the best clones of varieties suitable to the Clare Valley, and production grew from 80 tonnes to 500 tonnes per year by 1990.

“Brother John was inducted into the Clare Valley Hall of Fame in 2014 and received a Member of the Order of Australia (AM) in 2016 and became a lifetime member of the Wine Makers Federation in 2004, which is now called Australian Grape and Wine.”

“What he would have been most proud of is what he did for the local community,” he says.

“John May was a great man, one of the truly great gentlemen of the Australian wine industry and community, who will be sorely missed.”



Work Along the Riesling Trail

Allan Mayfield and Corey Wingard MP, Minister for Transport and Recreation had a lovely morning sharing the inspection of the newly restored Quarry Road Bridge.



The Riesling Trail Volunteers, Allan Mayfield, Trevor Mace, Mark Hill and Jordan are rebuilding part of the railway platform near the Showgrounds.



Below: The now completed railway station platform wall next to the Riesling Trail at the Showgrounds.

Volunteers: Doug May, Trevor Mace and Jason Gill.



Thanks Allan Mayfield and his Riesling Trail gang for helping us clear a path through a section of the overgrown Armagh Creek today. This stunning section of the Trail is part of Stage 2 of the Clare Valley Wine & Wilderness [CVWWT], which we hope to have open in a month or so.





Snake Season

Please be aware when walking, riding or running on the Riesling Trail in the months to come, it is snake season. This snake was seen sunbaking on the section where parkrun is, just before the Quarry Road Bridge. It is also advisable to keep your dog on a leash as they tend to 'sniff' out snakes and try to play with them. Snake bites are most of the time fatal to dogs.



parkrun every Saturday morning



Thank you to our Sponsors for their continued
support of the Riesling Trail



One of the Clare Valley's favourite wineries has a new owner.

Adelaide-raised entrepreneur Simon Clausen has purchased Skillogalee and says he's thrilled to be taking on the award-winning label.

"Given my love for all things wine and food, my connection with South Australia, and my interest in sustainability, Skillogalee is the perfect opportunity to combine those passions," he says.

Mr Clausen, now based in Switzerland, is planning a major investment in the Sevenhill property to continue growing its winery, accommodation and restaurant into a world-class destination.

"Taking on a much-loved and well-respected label like Skillogalee is a once-in-a-generation opportunity, and one I'm very excited about," he says.

"Most importantly however, it's about respecting the amazing business that Diana and Dave Palmer have created over the last 30 years and my first task is really getting to understand the current business before making any big changes."

"There is a lot of excitement and investment going on in the Clare Valley, and I am looking forward to playing whatever small part I can in that through Skillogalee."

Growing up in Adelaide near Penfolds Magill Estate, Mr Clausen has a long connection to the region, having spent most weekends as a teenager at a family property in Clare.



Clare Rise Bakery has been sold

Thank you Amanda and Harry for your outstanding service in your Bakery over the years and also for your generous support of the Riesling Trail and parkrun participants every Saturday morning.

You will be greatly missed and here's hoping for a wonderful new direction.

The new owner of Clare Rise Bakery is **Sanjay Chandapuram**, we wish him all the best for the future. Sanjay comes to us from Gumeracha.



Our newest Business Partner. Riesling Trail Bike Hire has been a supporter of the Riesling Trail for many years as a Business Friend.





Killikanoon Winery awarded 5 Stars for their 2015 Oracle Shiraz



The Little Red Grape Leasingham



O'Leary Walker Wines



The Ray White SA/NT Annual Awards for 2020/2021 received the following awards on the night:

Clare Valley—Top 5 Clients Choice,

Mark O'Meagher—Chairman's Elite Performer, Top 5 Clients Choice and Top 10 internationally,, Number 3 Principal in number of sales and Number 5 Principal in settled commission.



MacKenzie Homes and Commercial

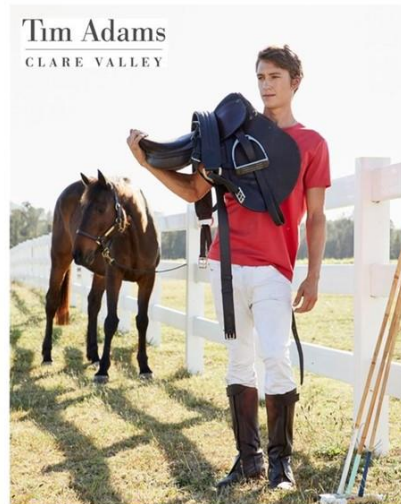


Tripadvisor Traveler's Choice Awards 2021—
Shut The Gate Wines

Top 10% of attractions worldwide.



Tim Adams Wines as team sponsors at the inaugural
Polo in the Vines, presented by the Clare Country Club
and Ray White Clare Valley on 9th October 2021.



Paulett Wines & Bush DeVines



Rohde's Free range Eggs



Paulett Wines & Bush DeVine Long Lamb Lunch 24th September 2021 from 11.30-4.00pm



Jim Barry Wines



Skillogalee Wines

The 2021 SA Variety Bash, thanks to Tim Adams Wines
and Mr Mick Cellar Door and Kitchen.



108 CARS - 330 PARTICIPANTS

Raised \$2.076M (net)

for kids in need!



Platinum Sponsor

Tim Adams
CLARE VALLEY
MR. MICK

Bottomless Hurtle Brunch Series at O'Leary Walker Wines, Leasingham

Sunday 3rd October from 9.00am until late



O'LEARY WALKER

**Bottomless
Hurtle Brunch**
'The Series'

Arts Collective



Introducing

Paulett's and Bush DeVine Winery & Restaurant's

New Logo

Introducing our new logo. In our design, the dots flow from the ochre colours of the desert to the hills, valleys and wine of the Clare region. Weaving their way through the name whilst also paying homage to the Utopian Indigenous artists represented by the Gallery. It also represents our journey from Alice Springs to Clare...





The Little Red Grape Leasingham



Clare Mitre 10



Paulett's Wines





Clare Country Club



Sevenhill Cellars Church

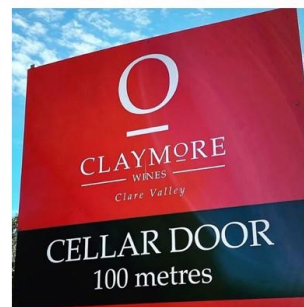


Neagles Retreat

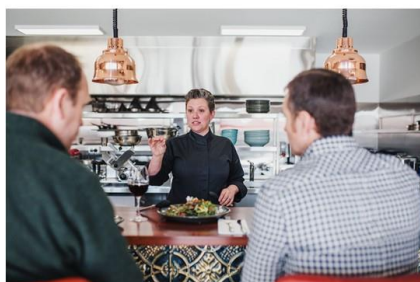


Above: closClare Winery

Below: Watervale Hotel



Skillogalee Winery



Thank you for your continued support of the Riesling Trail,
it is very much appreciated.

The Riesling Trail Committee

Traker Readings – 2021

MONTH	White Hut Rd	Clare	Sevenhill	Water-vale	Auburn	TOTAL	YTD
January	653	3379	3261	1318	592	9203	9203
February	544	2693	2341	1088	422	7088	16291
March	662	3562	3246	1550	806	9826	26117
April	796	5318	5356	2048	930	14448	40565
May	843	3552	3255	1715	908	10273	50838
June	517	2555	2653	1111	464	7300	58138
July	684	2520	2618	1152	445	7419	65557
August	734	2564	2176	1078	136	6688	72245
September						0	72245
October						0	72245
November						0	72245
December						0	72245
TOTAL	5433	26143	24906	11060	4703	72245	

MONTHLY VARIATIONS							
	White Hut	Clare	Sevenhill	Water-vale	Auburn	Total	YTD
Aug-21	734	2564	2176	1078	136	6688	72245
Aug-20	450	2754	2206	1182	459	7051	63296
Variation	63.11%	-6.90%	-1.36%	-8.80%	-70.37%	-5.15%	14.14%
YTD 2021	5433	26143	24906	11060	4703	72245	72245
YTD 2020	4308	25539	19304	9210	4935	63296	63296
Incr/Decr	26.11%	2.37%	29.02%	20.09%	-4.70%	14.14%	14.14%

Tax Deductible Donations are now easy to make

We rely heavily on donations to maintain and improve the Riesling Trail.

Individuals can claim their donations as a tax deduction if the funds are directed through the Australian Sports Foundation.

Simply click on the link which will take you to the Australian Sports Foundation website,

Payment Options [Click here](#), or search the Riesling Trail website at

[The Riesling Trail | The Riesling Trail Development Fund \(asf.org.au\)](#)

This method of donating is mainly for Donors who do not have an ABN for tax purposes.

Thank you for your support of the Riesling Trail, any donation is greatly appreciated.

If you have a specific project you would like to see completed and can make a significant contribution towards it, please contact the committee to discuss your requirements."

Contact Us

Chairman, Allan Mayfield M: 0418 818 569 E: allan@asmayfield.com.au

Vice Chairman, Mark Hill M: 0409 678 022 E: mlpjhill2@bigpond.com

Treasurer, Peter Wood M: 0411 662 384 E: retepdoow@gmail.com

Articles for the E-News, Website and Facebook to

Monica Trengove M: 0417 803 386

E: admin@rieslingtrail.com.au

All correspondence to The Treasurer PO Box 637 Clare SA 5453 or

E: admin@rieslingtrail.com.au

Thank you to our Business Partners



MacKenzie Homes
& Commercial pty Ltd.



**Gourmet
Cycling Tours**

Thank you to our Business Friends

Bentley's Hotel; Brice Hill Country Lodge; Calaby Real Estate; Caltex Roadhouse Clare; Clare Animal Health; Clare Building Supplies; Clare Family Dental; Clare Medical Centre; Clare Valley Cabins; Clare Valley Tours; Clare Valley Taxis; Clare Valley Toyota; 'Clarrie Bruce' Remedial Massage; Clarevale Cottage B&B; clos Clare; Complete Wool Services; CVBTA; Geoff Brock M.P; Jeanneret Wines; Jim Barry Wines; Knappstein Wines; M.R. Electrix [SA]; Max Montgomery Pty Ltd; MGA Insurance Brokers; Mid North Motor Co; Mid North Real Estate; Molly's Chase B&B; Mount Horrocks Wines; Pikes Wines; Pink's Mitre 10; RnR B&B; Ray White Clare Valley; Riesling Trail & Clare Valley Cottages; Rising Sun Hotel; Rohde's Free Range Eggs; St Helen's Country Cottages; Sussex Squire Wines; Watervale General Store.

Thank you to our Honorary Business Friends

Grosset Wines, Clare Valley Winemakers, Clare Quarry, MAIT Plumbing, SJM Carpentry Building Pty Ltd, Clare Signs & Design Centre, Smart Earthworks, Mace Engineering, Clare Metal Fabrications, Mid North Pest & Weed Control Pty Ltd, JC Gill, GP Architects, Clare Rotary Club, Clare District Lions Club.

A special thank you to the Clare & Gilbert Valleys Council for printing of the Newsletter for distribution to Members who do not have email.

Finally ... sincere thanks to you, as a Business or Individual Friend of the Riesling Trail for your continued support to upkeep and continually improve the Trail for users.

... from the Riesling Trail Team

Every season, another reason
