

Autumn on the Riesling Trail

---

# *The Riesling Trail*

---

**Hello Member**

**and welcome to our Autumn E-News | *Along the Riesling Trail ...***

Visit our website at <http://rieslingtrail.com.au/> for up to date information of what's happening on the Riesling Trail and around the Clare Valley.



# From the Chairman



We have been fortunate that the weather has been relatively mild this summer and so ideal to be out on the trail. Although the number of trail users is down a bit compared with this time last year it is way up compared with the years before that. As well as plenty of visitors from interstate, we are now beginning to see visitors from overseas as Australia opens up. I expect it will get busier as we head into autumn. Adding to the usual visitors will be more than 500 runners in the SA Road Runners Club's half marathon, 10km and 5km events on Sunday 3<sup>rd</sup> April. Sealing and line marking the section next to the Riesling Trail Cottages in Clare has been completed, making it safer and smoother for trail users. Funding for this came from the SA Government (Office for Recreation, Sport and Racing) and from our own funds. Thanks to Trevor Mace for supervising this and to Tristan Smart (Smart Earthworks), Jason Gill and YP Linemarking for doing such a good job. To keep the trail looking fresh and cared for we recently replaced the five geology signs along the trail. The old ones were deteriorating and new ones (done by Clare Signs and funded by our Committee) were installed with the help of volunteers Doug May and Bill Stuchbery.

Other projects in development include re-aligning the trail at Watervale so it follows where the line used to be. This will take out a somewhat awkward bend in the trail, and also tidy up the mess of dirt heaps dumped there years ago. This realignment will include building a new bridge at the northern (Sollys Road) end.

We are planning to put a shelter over the seat (donated by the local U3A Coffee and Chat group) next to the Riesling Trail bridge over the River Wakefield just north of Auburn, thanks to a generous donation from Stephanie Toole of Mount Horrocks Wines. Other donations in recent months for seats along the trail are from Neighbourhood Watch and the Cameron-Hill family.

Of course, Committee funding is only possible to a large extent from the great support of local businesses. For this we are very grateful and trust you can see that it is being put to good use to benefit the wider community. We are also very grateful to volunteers and for all those who do their bit to help keep the trail as appealing as it is.

**Allan Mayfield**  
**Chairman**



# Work Along the Riesling Trail

The Riesling Trail volunteers have completed the crossing next to Riesling Trail Cottages B&B.



---

## Doug, Allan and Bill putting up the Geology Signs along the Riesling Trail.

Doug, Allan and Bill are placing weather damaged information signs for Clare Valley Rocks along the Riesling Trail. This one is at the site of the old Clare Railway Station. Clare Valley Rocks celebrates the diversity of the Clare Valley wine region by telling the story of the earth between the vines. This project, a collaboration between Clare Valley Wine & Grape Association and leading geologist Mick Roche, investigates the influence of geology, soils, topography and climate on the character of Clare Valley wines. It highlights the diversity of the wines and the strong influence of 'terroir'. Look for other interpretive sites along the Riesling Trail and around the Clare Valley. Pick up a Clare Valley Rocks brochure/map at cellar doors. You can see typical soil profiles at participating cellar doors and discover how different rocks and soils play a role in the in the wine you taste.





---

## parkrun every Saturday morning

Giullio and Deb have sold their Olive Orchard and have now relocated to Adelaide to be nearer to their children and grandchildren. We wish them all the happiness they deserve.

---

### Farewell Giullio



## The very valuable Volunteers each week at parkrun



Regular parkrun participants, Peter and Sarah Wood.

---



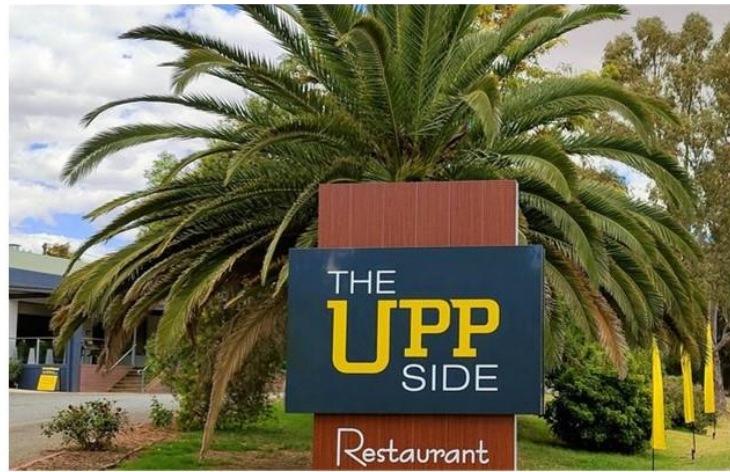
## Thank you to our Sponsors for their continued support of the Riesling Trail

---

Crabtree Wines in Watervale has a new Owner, Jason Cane. Jason works at Kilikanoon and in his spare time runs a Winery with the assistance of his partner Cristy Willmott.

It was a pleasure meeting you and we wish you both a very successful future.





A night out for some of the Riesling Trail Committee at UPPside Restaurant in Penwortham, a Riesling Trail Business Partner.  
 Chef Christian and his lovely wife Caity. Also present Sue & Ron Wurst, Mark & Paula Hill, Peter & Sarah Wood and Monica & Graham Trengove.







**Watervale Retreat**



**Paulett Wines &  
Bush deVine Restaurant**

Awarded to

**Bed in a Shed  
Vineyard Stay**

**Booking.com**  
Traveller Review Awards 2022

**9.9**  
out of 10







Jim Barry Wines



Tim Adams Wines



Left: Skillogalee Wines







**Clare Country Club**



**Penny Pratt and Louise Haines  
at the Watervale General Store**



**Clare Valley Tours**



**Left: Bungaree Station a few  
days after sheep work**





**2022 U3A**  
**ART EXHIBITION**

**Art House, Mill Street, Clare**

Wednesday 2nd to Monday  
28th March  
Open 10.30 am to 3.00 pm daily except Tuesdays,  
closing 1 pm on 28th

The U3A Art Group participants produce work in a number of styles: acrylic, oil, pastel, watercolour etc. with a broad range of subjects.




Paintings from 2 of our artists, Ann Foster and Susan Little. Group photo of some Art Group Members at a previous exhibition launch. Paintings and cards for sale during the exhibition



This group is one of U3A Lower North's longest standing activities. We invite you to come and see some of the work of our talented local artists



**U3A**  
LOWER NORTH

Calaby Real Estate

PROPERTY  
SALES



**agent of the year awards**  
SUBURB WINNER  
2022

**Agent of the Year**  
**Clare**

**Agent of the Year**  
Burra





**agent of the year awards**  
SUBURB WINNER  
2022

**Graeme Nield**  
Mid North Real Estate





Ray White.

Another  
**SOLD**

Mark O'Meagher  
0424 156 780  
mark.omeagher@raywhite.com.au  
raywhiteclarevalley.com.au



Happy 9th  
Anniversary!



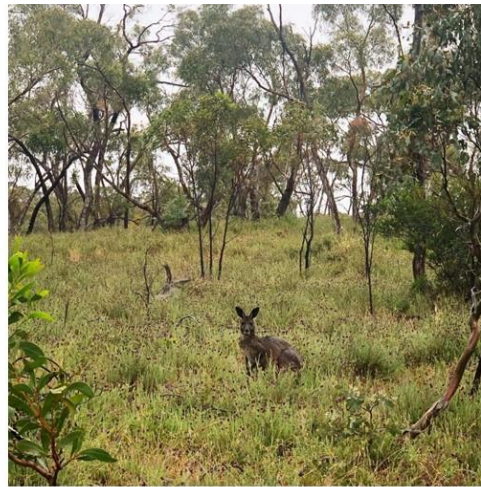
**Watervale Hotel 'Best Environmental & Energy Efficient Practices Hotel'**



**Rising Sun Hotel, Auburn**







Molly's Chase Accommodation

**POWER GARDEN REDEMPTIONS**

**FREE** BLUETOOTH JOBSITE RADIO OR JOBSITE FAN OR LED WORKLIGHT OR INFLATOR  
intended as credit or bonus incentive

with selected **K510P 40V Max Line Trimmer & Multi-Function Powerhead Kits**

**FREE** **40V 18V BRUSHLESS LINE TRIMMER**  
with selected 40V 18V2 Lawn Mower Kits

**FREE** **40V 18V BRUSHLESS BLOWER**  
with selected 40V 18V2 Line Trimmer & Multi-Function Powerhead Kits

**FREE** **BRUSHLESS BLOWER**  
with the Direct Connect Brushless Self-propelled Lawn Mower Kit

\*See Makita.com.au/promotions for all applicable models, dates, terms & conditions. Offer available 1st February - 31st March 2022

Mitre 10 Clare



Jeanneret Wines



Rohdes Eggs

**PIKES**  
CLARE VALLEY

Pikes Wines

**CLARE VALLEY SCA GOURMET WEEK**  
15-22 MAY 2022

**SUN, 15 MAY AT 11:00**  
**Gourmet Garden Party at Pikes**

Thank you for your continued support of the Riesling Trail,  
it is very much appreciated.

The Riesling Trail Committee

## Traker Readings – 2022

MONTH	White Hut Rd	Clare	Sevenhill	Watervale	Auburn	TOTAL	YTD
January	624	3211	3075	1268	404	8582	8582
February	581	3098	2373	1092	301	7445	16027
March						0	16027
April						0	16027
May						0	16027
June						0	16027
July						0	16027
August						0	16027
September						0	16027
October						0	16027
November						0	16027
December						0	16027
TOTAL	1205	6309	5448	2360	705	16027	

### MONTHLY VARIATIONS

	White Hut	Clare	Sevenhill	Watervale	Auburn	Total	YTD
Feb-22	581	3098	2373	1092	301	7445	7445
Feb-21	544	2693	2341	1088	422	7088	7088
Variation	6.80%	15.04%	1.37%	0.37%	-28.67%	5.04%	5.04%
YTD 2022	1205	6309	5448	2360	705	16027	16027
YTD 2021	1197	6072	5602	2406	1014	16291	16291
Incr/Decr	0.67%	3.90%	-2.75%	-1.91%	-30.47%	-1.62%	-1.62%

## Tax Deductible Donations are now easy to make

We rely heavily on donations to maintain and improve the Riesling Trail.  
Individuals can claim their donations as a tax deduction if the funds are directed  
through the Australian Sports Foundation.

Simply click on the link which will take you to the Australian Sports Foundation website,



Payment Options [Click here](#) or search the Riesling Trail website at [The Riesling Trail | The Riesling Trail Development Fund \(asf.org.au\)](#)  
This method of donating is mainly for Donors who do not have an ABN for tax purposes.

Thank you for your support of the Riesling Trail, any donation is greatly appreciated.

If you have a specific project you would like to see completed and can make a significant contribution towards it, please contact the committee to discuss your requirements."

---

## Contact Us

Chairman, Allan Mayfield M: 0418 818 569 E: [allan@asmayfield.com.au](mailto:allan@asmayfield.com.au)

Vice Chairman, Mark Hill M: 0409 678 022 E: [mlpjhill2@bigpond.com](mailto:mlpjhill2@bigpond.com)

Treasurer, Peter Wood M: 0411 662 384 E: [retepdoow@gmail.com](mailto:retepdoow@gmail.com)

Articles for the E-News, Website and Facebook to

Monica Trengove M: 0417 803 386

E: [admin@rieslingtrail.com.au](mailto:admin@rieslingtrail.com.au)

All correspondence to The Treasurer PO Box 637 Clare SA 5453 or

E: [admin@rieslingtrail.com.au](mailto:admin@rieslingtrail.com.au)

---

## Thank you to our Business Partners



---

## Thank you to our Business Friends

Bentley's Hotel; Brice Hill Country Lodge; Calaby Real Estate; Caltex Roadhouse Clare; Clare Animal Health; Clare Building Supplies; Clare Family Dental; Clare Medical Centre; Clare Valley Cabins; Clare Valley Tours; Clare Valley Taxis; Clare Valley Toyota; 'Clarrie Bruce' Remedial Massage; Clarevale Cottage B&B; clos Clare; Complete Wool Services; CVBTA; Geoff Brock M.P; Jeanneret Wines; Jim Barry Wines; Knappstein Wines; M.R. Electrix [SA]; Max Montgomery Pty Ltd; MGA Insurance Brokers; Mid North Real Estate; Molly's Chase B&B; Mount Horrocks Wines; Pikes Wines; Pink's Mitre 10; Ray White Clare Valley; Riesling Trail & Clare Valley Cottages; Rising Sun Hotel; Rohde's Free Range Eggs; St Helen's Country Cottages; Sussex Squire Wines; Watervale General Store.

## Thank you to our Honorary Business Friends

Grosset Wines, Clare Valley Winemakers, Clare Quarry, MAIT Plumbing, SJM Carpentry Building Pty Ltd, Clare Signs & Design Centre, Smart Earthworks, Mace Engineering, Mid North Pest & Weed Control Pty Ltd, JC Gill, GP Architects, Clare Rotary Club, Clare District Lions Club.

A special thank you to the Clare & Gilbert Valleys Council for printing of the Newsletter for distribution to Members who do not have email.

---

Finally ... sincere thanks to you, as a Business or Individual Friend of the Riesling Trail for your continued support to upkeep and continually improve the Trail for users.

... from the Riesling Trail Team

*Every season, another reason*

---

This E-News was produced by Monica.Trengove Marketing Sub-committee, Riesling Trail

---